

ASTUTE HELMET FOR PEOPLE

N.ellan chezhia, s.srikiran rao, R.suraj

I ABSTRACT

We have witness many accidents in our day to day life in this the amount of bike accidents is more than other type of accidents, since we can't avoid accidents, we depend upon hospitals for the aftermath so here we can increase the speed of response from the hospital for the person aid who met with an accident by fitting brain wave sensors and temperature sensor and a GPS, GSM technology in the helmet. So that we can utilize those precious timing that determines the life or death of that person.

II INTRODUCTION

In recent scenario the accidents that occurs in hostile or in remote, highway left unnoticed by the people because of it there is a delay in informing the hospital so the person loses the precious time for saving his life . Even though we carry a protective helmet it's impossible to save the person from the injury so in this paper we plan to send the message and information of the person who met with an accident to the local hospital without any delay so that we create that precious time in saving a life.

III CONSTRUCTION

Processor:

It is a logic circuitry which responses and processes the given instruction to it. The electronic circuitry that is used to do the work contains millions of very small component inductor, transistor, resistor & diode. Mounted in a single integrated circuit.

Heat sensor:

It is used to detect the heat energy and convert it to electrical signal. The heat sensor measures the variation of temperature near it .it is widely used in industry, hospital etc., it monitor change in liquid, gas and even solid object.

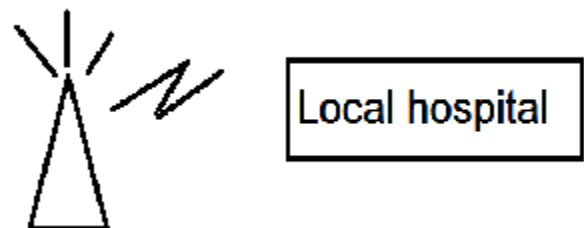
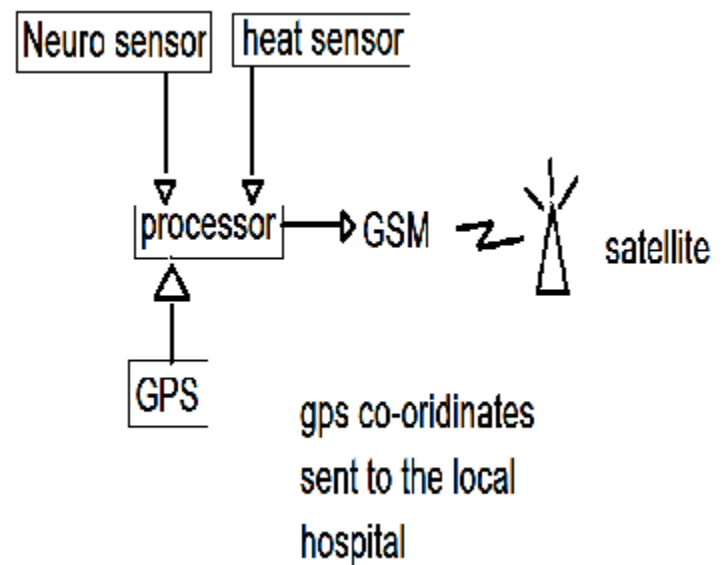


Fig 1: block diagram.

Neuro sensor:-

The communication between neuron within our brain which occurs due to our thought and emotion. It is produced by mass of neuron communicating with each other hence producing Synchronized electrical pulse.it picks up the signal by using electrodes. Converts the signal to Digital signal.

GPS & GSM:

GPS stands for Global Positioning System. It is a radio navigation system which allows us to track the exact location in land, sea, airborne in the world. In any weather condition GSM stands for Global System for Mobile communication. It is a digital mobile telephony system that is widely used in many countries. it works NY using a variation of time division multiple access (TDMA) and it is also used in some of digital wireless telephony technology such as TDMA, GSM, and CDMA.

IV WORKING

In this , when a person met with an accident, immediately the brainwave sensor and the heat sensor detects any sudden change in brainwave signal this signal and heat dissipation is caused in human beings when there is any sudden shock is created during accidents . when these sensors detects any unusual change in human brain signal if it exceeds the limit it activates the GPS beacon and gets the location coordinates from the satellite and sends the location coordinates and the level of the injury the person is suffering from through the GSM .these information is sent to the hospital that located in that accident zone so that the hospital can send ambulance for providing first aid to the person met with an accident.

V RESULT

The electrode that is used to measure the signal waves from the brain is placed inside the helmet and tests the person's brain activity and the heat regularly. When accident occurs to the person the sudden change in brain waves triggers the sensors and sends the location and the level of causality or injury that the person is suffering from. By using the location coordinates from the received message we can able to track the location of the accident and also the condition of the person who met with the accident.



Fig 2: shows the electrode placing for the sensors.

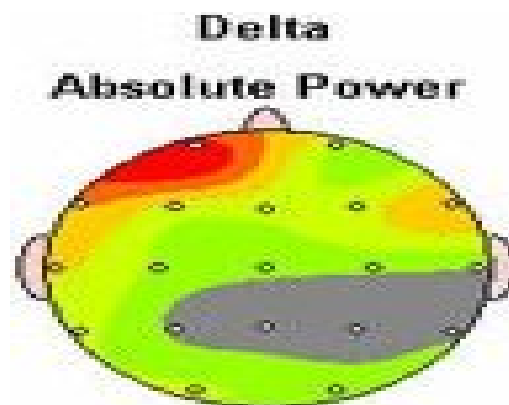


Fig 3 : the part of the brain which emits high delta radiation.

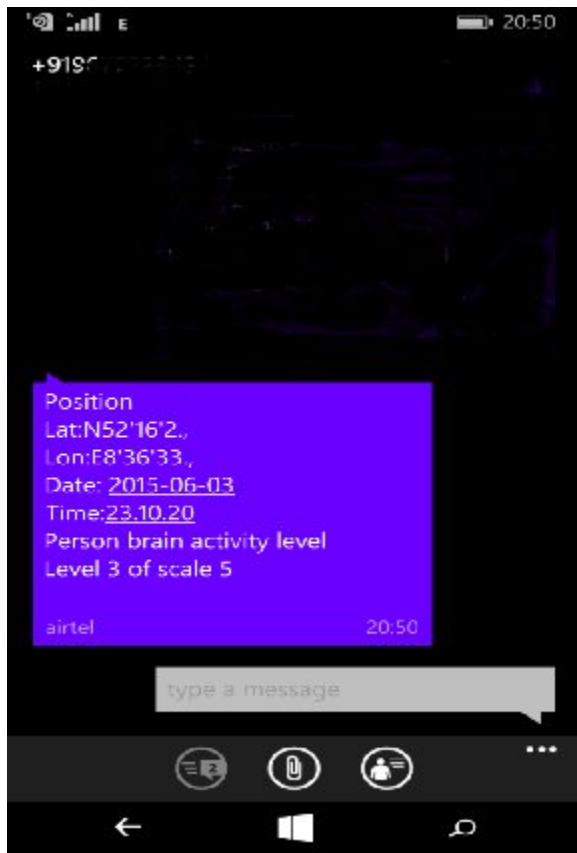


Fig 4: message sent as SMS using GSM.

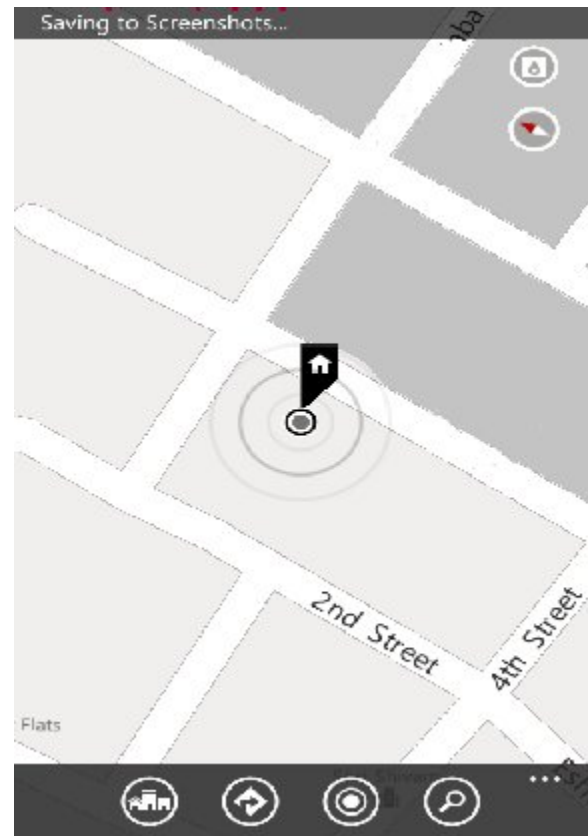


Fig 5: shows the location of the person.

VI REFERENCE

- 1)https://en.wikipedia.org/wiki/Global_Positioning_System
- 2)<http://searchmobilecomputing.techtarget.com/definition/GSM>
- 3)<https://en.wikipedia.org/wiki/NeuroSky>